



Global Best Provider of Electrical & Electronic Solutions

Hansol Technics

Company Profile

About Hansol Group

Hansol declared independent management separated from Samsung Group in 1991, Hansol is leading the industry in a variety of fields with about 20 companies.

Hansol Overview

Hansol means Big pine tree

Our Mission

MISSION



Achieve
Competitive Advantage
through Differentiation



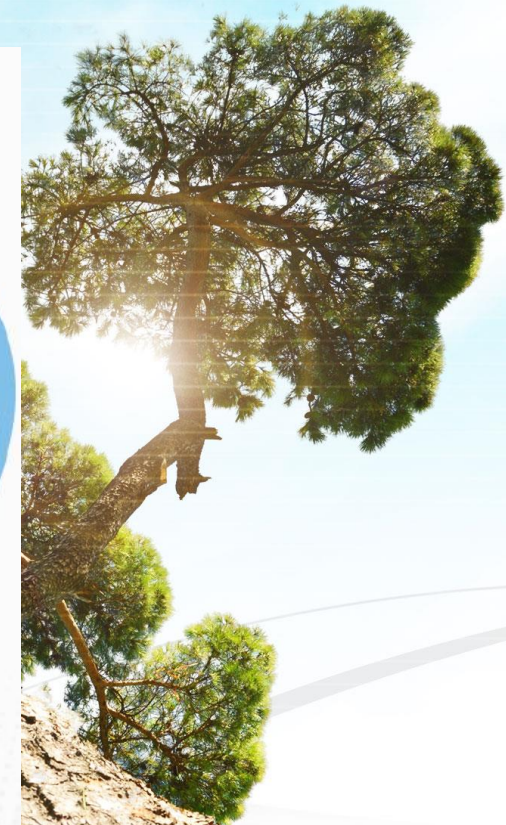
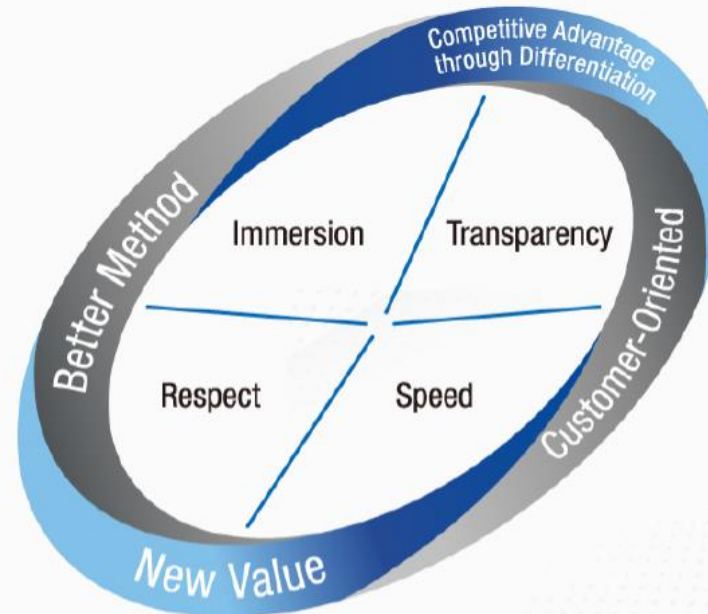
Value Maximization



Sustainable
Development
with Customers

Our Principles

PRINCIPLE





SAMSUNG



SHINSEGAE

1993

1995

1991

1997

Food
Food Materials
BIO
Living Resource

Electronic
Paper
Home material
Chemical
Plant
Logistic
Resort
IT solution

Electronic
Heavy Industry
Finance, Insurance
Construction
Chemical
Trading

Hotel
Department
Distribution
Duty Free Shop
Construction

Hansol is strengthening its position in the global market based on its excellent competitiveness and expertise. Hansol aims to continuously grow together with customers through achieving maximum value.



Material Business

Hansol Technics

- Hansol IONES

Hansol Paper

- Hansol EcoPackaging

Hansol HomeDeco

- Hansol VHOM

Hansol Papertech

Hansol Chemical

- Tapex
- Sol Materials
- HS Materials
- Hansol Electronic Materials Co., Ltd.



Solution Business

Hansol Logistics

- Hansol TCS
- Hansol LogisYou
- Logismile

Hansol Inticube

- Stickers Corporation

Hansol PNS

- Hansol BS
- Hansol Coever



R&D Business

Hansol Paper Technology Research Institute

Hansol Group Global Network



About Hansol Technics

With evergreen challenge and creativity,
Hansol is born again as the 21st century world best company

KOSPI

(Korea Composite Stock Price Index)

Hansol Technics

A004710

Hansol Group

www.hansol.com

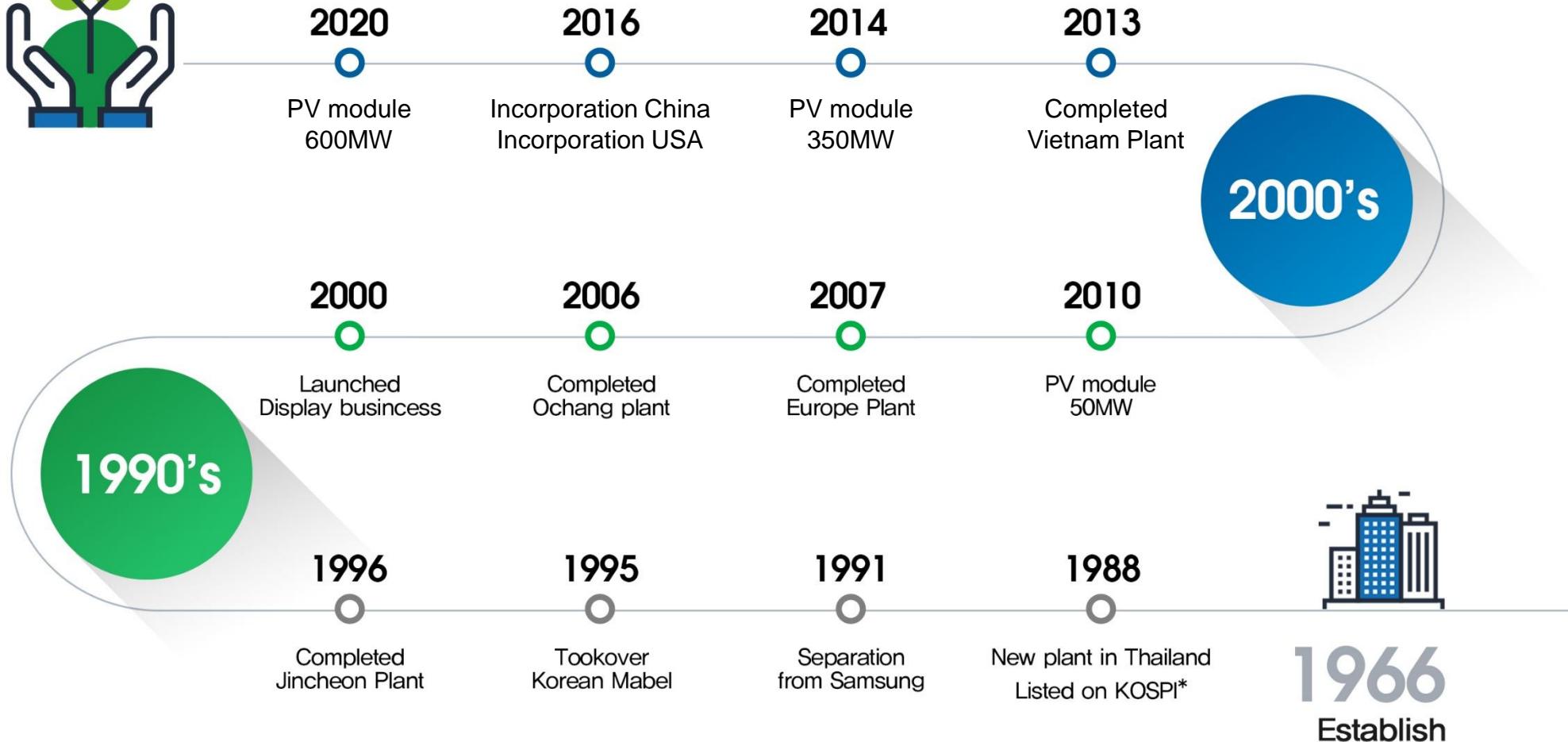
Hansol Technics

www.hansoltechnics.com



Hansol Technics History

Hansol Technics will grow to the world-leading value-added enterprise of the 21st century by providing the best products and services with the spirit of continuing challenge and creativity



Hansol Technics Business Sites

With the vision of man-centric, technology-based and future-oriented management, Hansol Technics is growing to the leading company in the components and material sector, such as EMS, LED Ingot/Wafer and Solar Module, based on technology and innovation



Head Quarters

[A] 5 FL, B-PINE AVENUE Bldg., EUjiro 2-ga, Jung-gu, Seoul, Korea

[T] 02 3287 7903 [F] 02 6031 0940



Suwon

[A] 16, Deogyong-daero 1556beon-gil, Yeongtong-gu, Suwon-si, Gyeonggi-do

[T] 031 8061 2620 [F] 031 8061 2699



Jincheon

[A] 27-19, Hancheon-ri, Deoksan-myeon, Jincheon-gun, Chungbuk

[T] 043 540 8000 [F] 043 536 8105



Ochang

[A] 140, Gwahaksaneop 1-ro, Oksan-myeon, Heungdeok-gu, Cheongju-si, Chungcheongbuk-do

[T] 043 219 3000 [F] 043 219 3410



Introduction

Aspiring to be the Global best provider of electrical & electronic solutions, we aim to achieve our business goal through distinctive technical capabilities and ongoing innovation.



Company Overview

- Foundation** 1995
- CEO** Yoo, Kyung Joon
- Revenue** US\$ 12.0 Billion (2023)
- Employee** 11,000 employees (600 domestic, 10,400 international)



Business Sites



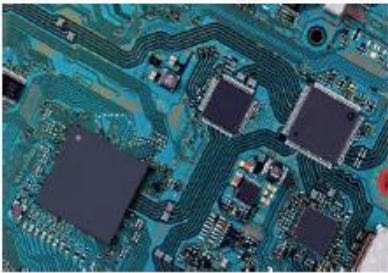
Quality Management System
ISO9001/ISO14001

Health and safety management system(OHSMS)
ISO45001

International Automotive Quality Management System
IATF16949



Business Area



Electronic Components



Energy Solutions



Automotive Parts



Smartphones

Hansol Technics Business Area

Electronic Components

We provide TV and home appliance power products with excellent performance and stable quality, contributing to our customers' innovation.



Automotive Parts

We offer LED lamps and automotive parts with advanced power control technology and high reliability, enhancing customers' quality trust in product quality.



Energy Solutions

We lead in creating value with high-quality, cost-effective, eco-friendly solar modules and LED solutions.



Smartphones

Through our manufacturing expertise, we grow with customers, offering wireless charging modules and EMS for smartphones and tablets.



About Solar Business

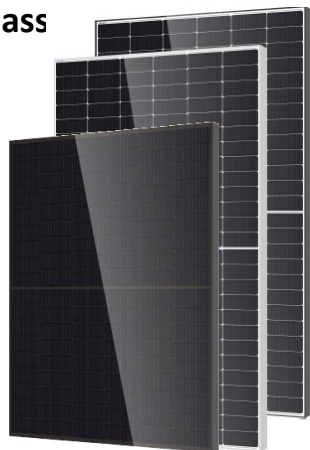


Hansol Technics Business

Solar Line-up

2025 for USA

| | | | 1Q | 2Q | 3Q | 4Q |
|---|--|---------------------------|---------------------------------|---------------------------------|---------------------------------|---------------------------------|
| Module assembly in Korea Bifacial Single-Glass | Black Series (Residential) 108Cells ~ 120Cells | Launching Soon | | | | |
| | Normal Series (Commercial) 144Cells ~ 156Cells | | | | | |
| Module assembly in overseas(OEM/ODM) Bifacial Double-Glass | Black Series (Residential) 108Cells TOPCon Inch : 44.65 x 67.80 x 1.18 in Millimeter : 1134 x 1722 x 30 mm | | 430 (22.0%) (420~440) | 430 (22.0%) (420~440) | 435 (22.3%) (420~440) | 435 (22.3%) (420~440) |
| | 120Cells TOPCon | Certified(UL), Negotiable | | | | |
| | 132Cells TOPCon | | | | | |
| | Normal Series (Commercial) 144Cells TOPCon Inch : 44.65 x 89.69 x 1.18 in Millimeter : 1134 x 2278 x 30 mm | | 590 (22.8%) (580~600) | 595 (23.0%) (580~600) | 600 (23.2%) (580~600) | 600 (23.2%) (580~600) |
| | 156Cells TOPCon Inch : 44.65 x 97.05 x 1.18 in Millimeter : 1134 x 2465 x 30 mm | | 635 (22.7%) (630~650) | 640 (22.9%) (630~650) | 645 (23.1%) (630~650) | 650 (23.3%) (630~650) |

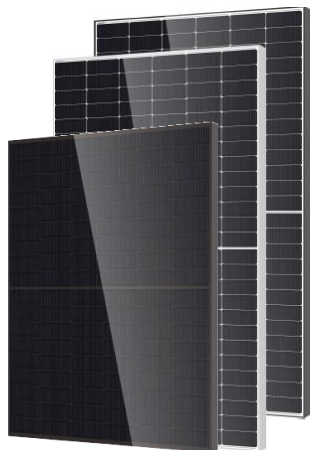


Hansol Technics Business

Solar Line-up

2025 for overseas (Made in China)

High Power series



Normal Series (Commercial)

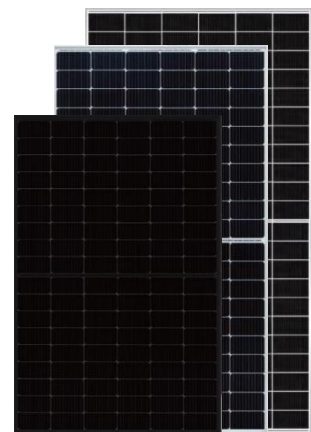
| | 1Q | 2Q | 3Q | 4Q |
|---|-------------------------------|-------------------------------|-------------------------------|-------------------------------|
| 156Cells TOPCon 1134 x 2465 x 30 mm | 630 (22.5%) 625~635 | 630 (22.5%) 625~635 | 630 (22.5%) 625~635 | 635 (22.7%) 625~635 |

| | | | | |
|---|---------------------------------|---------------------------------|---------------------------------|---------------------------------|
| 144Cells TOPCon 1134 x 2278 x 30 mm | 585 (22.6%) (580~590) | 590 (22.6%) (580~590) | 590 (22.6%) (580~590) | 590 (22.8%) (580~590) |
|---|---------------------------------|---------------------------------|---------------------------------|---------------------------------|

Black Series (Residential)

| | | | | |
|---|---------------------------------|---------------------------------|---------------------------------|---------------------------------|
| 108Cells TOPCon 1134 x 1762 x 30 mm | 445 (22.3%) (440~450) | 450 (22.5%) (440~450) | 450 (22.5%) (440~450) | 450 (22.5%) (440~450) |
|---|---------------------------------|---------------------------------|---------------------------------|---------------------------------|

Premium HJT Series (High Efficiency)



Normal Series (Commercial)

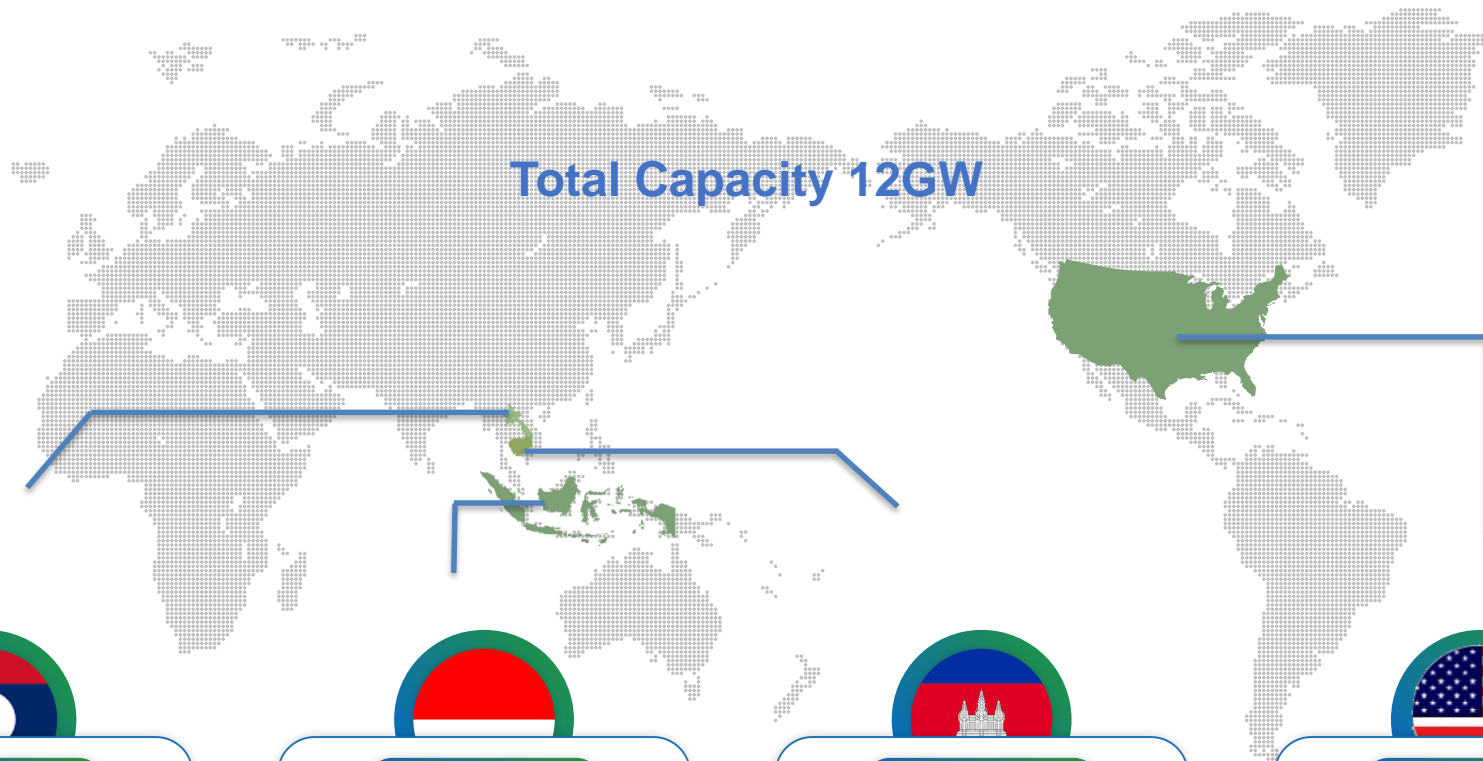
| | | | | |
|--|---------------------------------|---------------------------------|---------------------------------|---------------------------------|
| 132Cells HJT 1303 x 2384 x 33 mm | 720 (23.2%) (710~730) | 720 (23.2%) (710~730) | 725 (23.3%) (710~730) | 730 (23.5%) (710~730) |
|--|---------------------------------|---------------------------------|---------------------------------|---------------------------------|

| | | | | |
|--|---------------------------------|---------------------------------|---------------------------------|---------------------------------|
| 120Cells HJT 1303 x 2172 x 33 mm | 630 (22.3%) (625~635) | 630 (22.3%) (625~635) | 635 (22.4%) (630~640) | 640 (22.6%) (635~645) |
|--|---------------------------------|---------------------------------|---------------------------------|---------------------------------|

Black Series (Residential)

| | | | | |
|--|---------------------------------|---------------------------------|---------------------------------|---------------------------------|
| 108Cells HJT 1134 x 1722 x 30 mm | 440 (22.5%) (420~430) | 440 (22.5%) (420~430) | 440 (22.5%) (420~440) | 445 (22.8%) (420~440) |
|--|---------------------------------|---------------------------------|---------------------------------|---------------------------------|

Hansol Technics Global Partner(USA)



LAOS

- Production Capa
- 3.0GW
- Supply Capa for Hansol
- 2.0GW
- Specifications
- TOPCon 590W+



INDONESIA

- Production Capa
- 5.0GW
- Supply Capa for Hansol
- 3.0GW
- Specifications
- TOPCon 590W+
- TOPCon 430W+(Black)



CAMBODIA

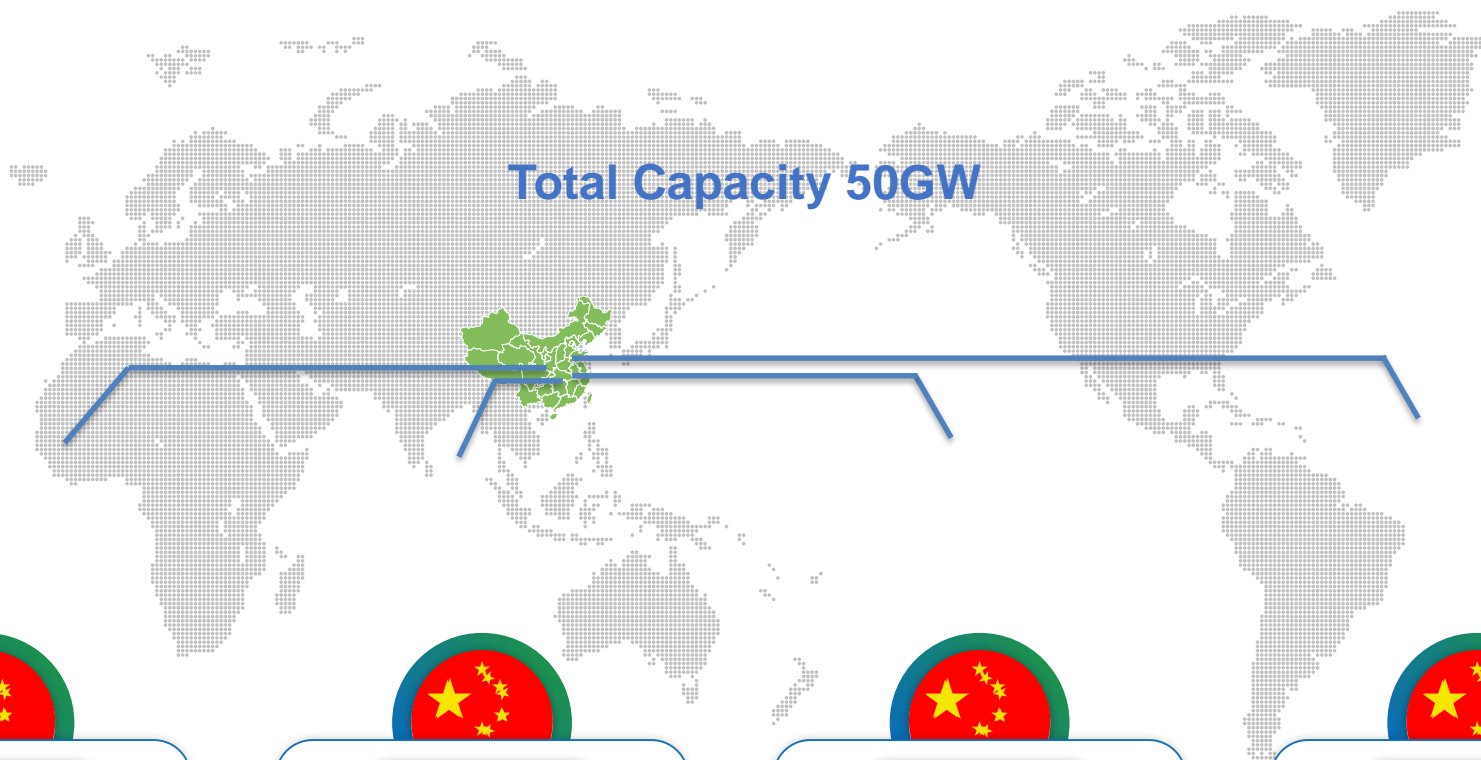
- Production Capa
- 1.5GW + 1.3GW
- Supply Capa for Hansol
- 1.0GW + 1.0GW
- Specifications
- PERC 550W+



AZ USA

- Production Capa
- 1.0GW
- Supply Capa for Hansol
- 0.5GW
- Specifications
- TOPCon 590W+
- TOPCon 430W+(Black)

Hansol Technics Global Partner(China)



CN Shangsha

- Production Capa
- 5.0GW
- Supply Capa for Hansol
- 4.0GW
- Specifications
- TOPCon 590W+



CN Yiwu

- Production Capa
- 12.0GW
- Supply Capa for Hansol
- 4.5GW
- Specifications
- TOPCon 590W+



CN Jiangsu

- Production Capa
- 16.0GW
- Supply Capa for Hansol
- 6.0GW
- Specifications
- TOPCon 590W+



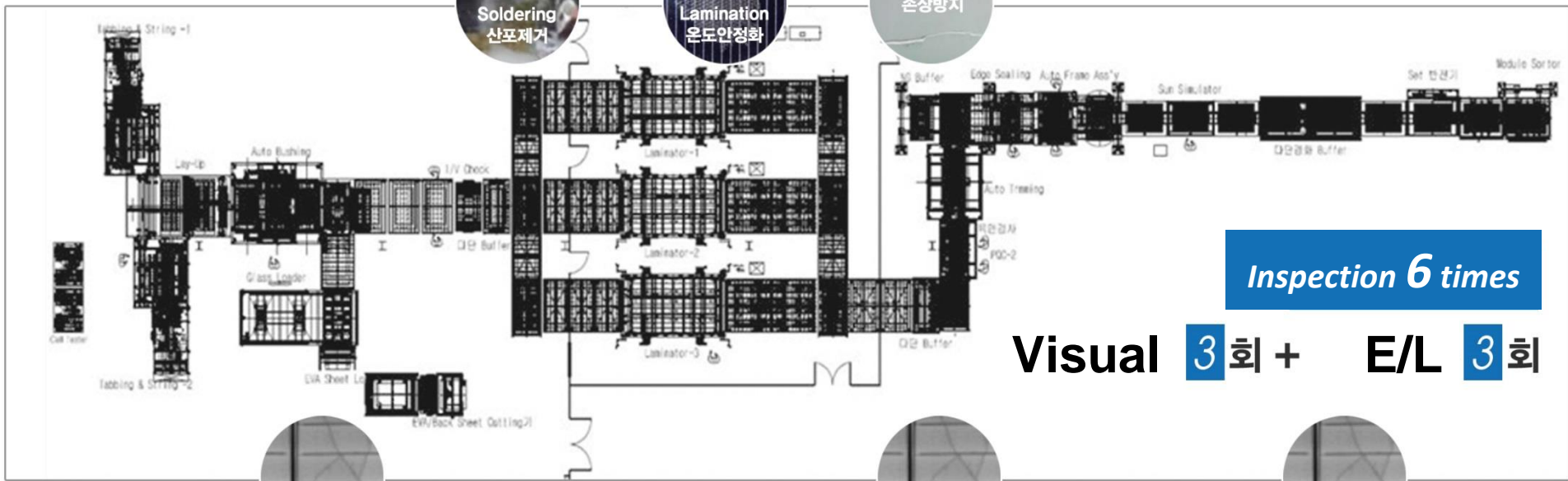
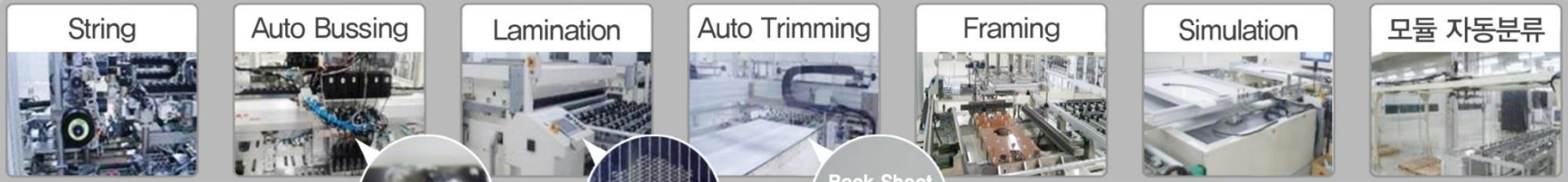
CN Shandong

- Production Capa
- 20.0GW
- Supply Capa for Hansol
- 10.0GW
- Specifications
- HJT 650W+

Solar Modules Business

Factory automation 90% for stable qualities

Manufacturing Process



Inspection 6 times

Visual 3회 + E/L 3회

Inspection Process



Solar Modules Business

Key feature : High Level Long-term quality assurance

| Test | Standard | Conditions |
|----------------------|--|--|
| PID | IEC TS 62804-1:2015 | 900Hr, ±1,500V, Temp. 85°C |
| Ammonia | IEC 62716:2013 | NH3 6667ppm, Temp. 60°C, Humi. 100% |
| Salt mist | IEC 60068-2-52 | Level 8 (Highest class) |
| Damp Heat | IEC 61215:2005 2 nd Edition | 3,000hr, Temp. 85°C, Humi. 85% (IEC Standard x 3times) |
| Thermal cycling test | IEC 61215:2005 2 nd Edition | 400 Cycles, Temp. -45°C ~ 85°C (IEC Standard x 2times) |

* The testing lab of Hansol Technics is certified by

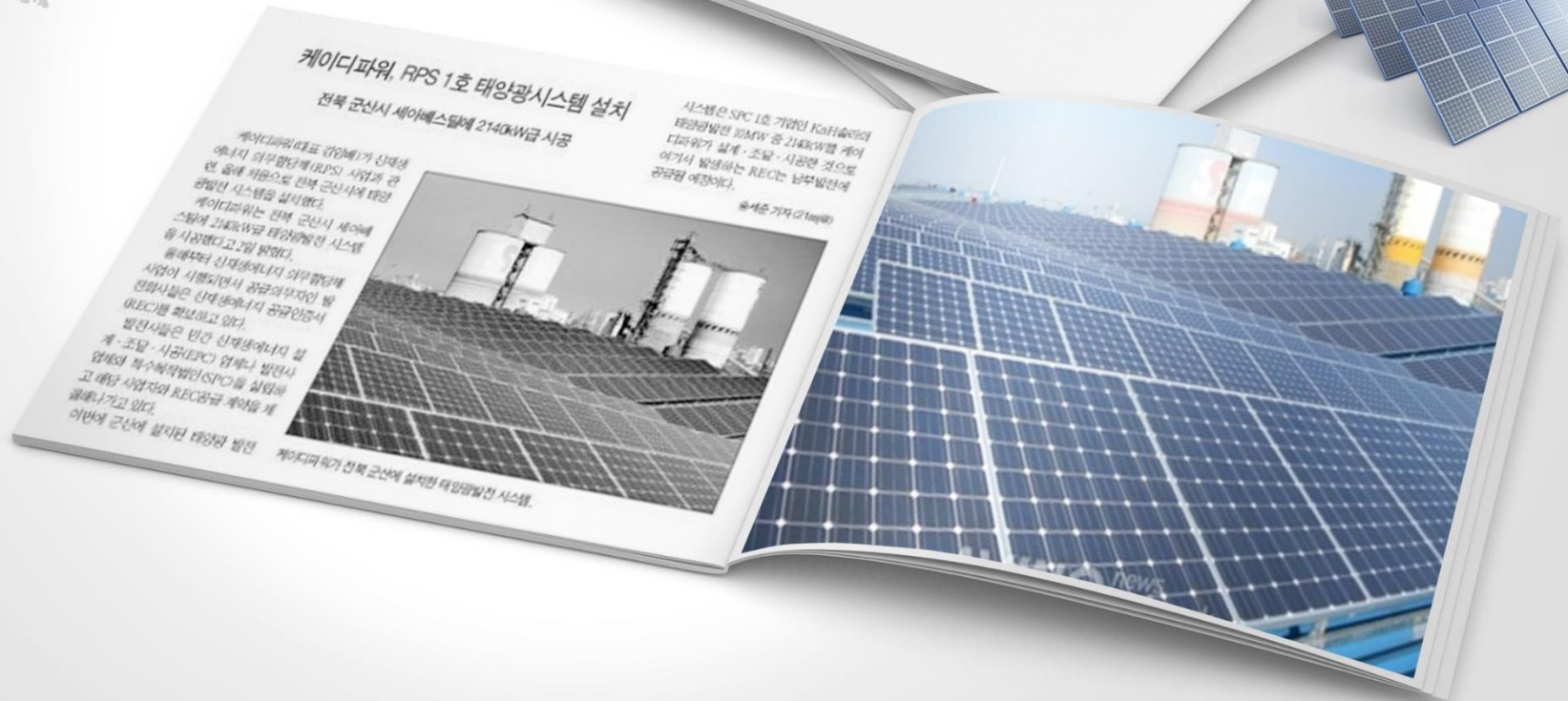


Hansol Technics

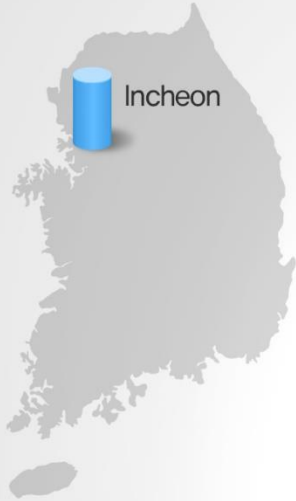
Global Solar Material Company



Appendix. Installation result



Appendix. Installation result



Incheon



케이디파워, 태양광발전소 완공

인천 공촌정수장에 1.4MW급 설치 · 年 1230t CO₂ 감축

케이디파워(대표 김임혜)가 대규모 태양광발전소를 완공했다. 케이디파워는 인천시 서구 공촌정수장에 1.4MW급 태양광 발전설비(사선)를 완공했다고 25일 밝혔다. 회사측은 1.4MW급 태양광 발전설비는 60세대가 동시에 사용할 수 있는 전력을 생산하고 연간 1230t가량의 이산화탄소 배출량을 감축할 수 있다고 설명했다.

이제 앞서 케이디파워는 지난 4월 인천시 상수도사업본부, 한국전력공사 등과 함께 신재성까지 공공저수지 제도(RPS)를 활용한 태양광발전

업 이해커서(MOU)를 체결한 바 있다. 인천 공촌정수장 태양광발전소는 케이디파워가 발전소를 설치하고 상수도사업본부에서 사업부지를 제공, 케이디파워와 남부발전이 설립한 SPV법인(특수목적법인) 코디솔라에 사업운영권을 맡게 된다.

이번 사업은 농지훼손을 최소화하기 위해 외부에 노출된 정전지 상부에 태양광모듈을 설치해 방사성 물질 등 낙진양지와 수질 계산을 위한 시설을 포함해, 시공됐다.

이오숙 케이디파워 RPS 본부장은 "상수도본부 본래 4개 정수사업소에 태양광 설비를 설치할 수 있는 부지가 1.2만 8000㎡에 이른다"면서 "앞으로 발전량 10MW이상의 태양광발전

송세준 기자(1sp@)

공촌정수장 태양광발전설비 설치 예상 조감도

Appendix. Reference (USA)

Swansea 2.2MW



New York 2.7MW



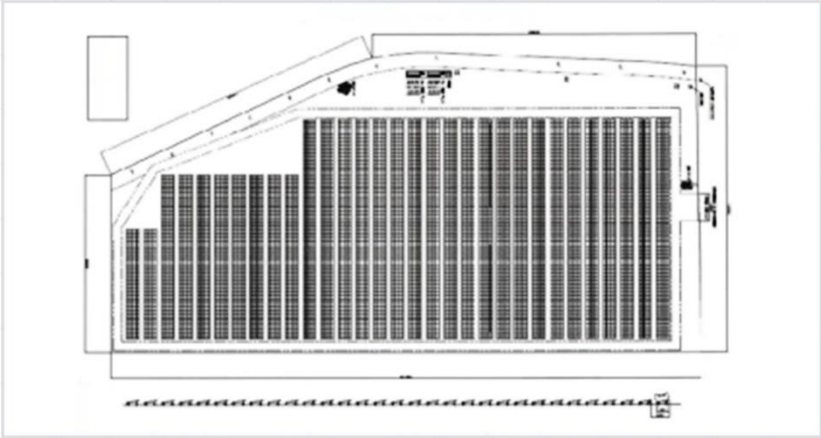
Carver 2.8MW



Shrewsbury 3.3MW



Appendix. Installation result (JAPAN)



Appendix. Reference (Korea)



Appendix. Reference

1.0MW+ 0.4MW +0.8MW

0.8MW+0.75MW+0.5MW



Appendix. Reference

0.5MW+ 1.0MW



0.1MW+1.0MW



Appendix. Reference (Water Floating)

Goheung-ho (Ocean) 20MW



Sosoo plant (Lake) 2MW

